

Try first,
don't just say I can't.
Try and find a way to do it.

Kazuma Tateisi
Omron's founder

We will exceed
your expectations

Yoshihito Yamada, President and CEO

For 80 years, we have worked with our customers to develop new and innovative products.
With you and our dedicated, passionate and involved employees, we open the door to tomorrow,
meeting the needs of people around the world.



OMRON

Listed in Forbes Top 2000 largest companies of the globe
Omron Corporation NASDAQ: OMRNY
Top ranking in Dow Jones Sustainability Index
Thomson Reuters Top 100 Global innovators

▶ omron.me/omr_ir

2013 THOMSON REUTERS
TOP 100
GLOBAL INNOVATORS

 Dow Jones
Sustainability Indexes
Member 2011/12

NASDAQ



1933

Kazuma Tateisi
established Omron



1960

Invention of the
proximity switch



1972

Japan's first factory for workers
with disabilities set up



1974

Omron established in Europe



2007

Omron's face recognition



2009

Safety assessment services
introduced



2011

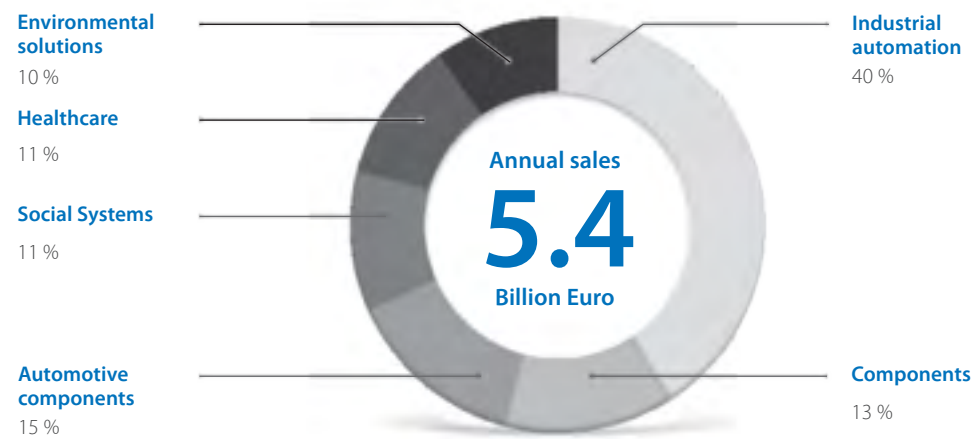
Introduction Sysmac
machine controller

80

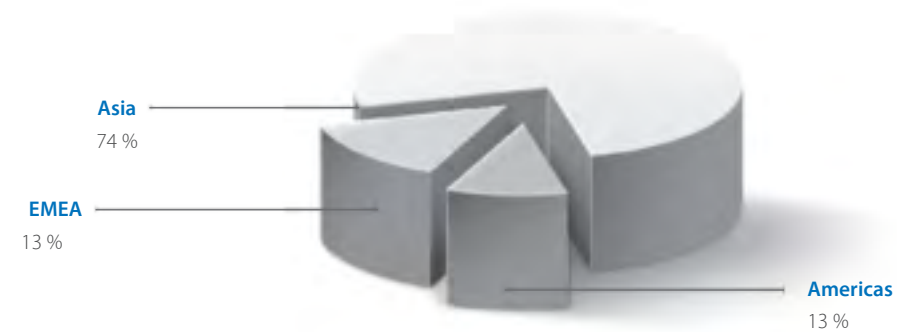
years of experience in sensing & control
Founded in Osaka, Japan in 1933

The facts

Omron's Businesses



Sales by geographical region



37,000

Employees worldwide

210

Locations worldwide

5.4

Billion Euro annual sales





Yoshihito Yamada

President and CEO

We have grown as a business

...by working with customers to develop new and innovative products. It's always been that way – our initial impetus for growth came when a friend of our founder suggested that he try to develop a high-speed timer for X-Ray photography.

That cooperative spirit has become part of our company DNA. We listen to our peers and involve them in our product-development actions. It sets us apart from others and makes us – and our customers – much stronger.

So demand – and expect – more from us. That way, we will continue to develop the products, systems and solutions that can help us create tomorrow's opportunities.

▶ omron.me/omr_annual

A hand holding a black pencil is positioned over a document with a grid pattern. In the foreground, an Omron FZ-SLC100 intelligent camera is shown, featuring a lens and a sensor array. The camera has a label with the text "omron FZ-SLC100 INTELLIGENT CAMERA", "SER No. 0485307", and "OMRON Corporation". A smaller label on the side of the camera reads "omron FZ-SC CAMERA" and "MADE IN JAPAN".

7%

Annual investment in research & development

Every year, we invest heavily in R&D, and even when market conditions are tough, we never back away from this commitment. Because it is only through innovation, and through continuing to push back the boundaries, that we will continue to create systems and devices that take the vital next step. The proof is in our outstanding track record of continuous innovation.



Innovation track record of 80 years

Top 150 Global Patent assignee

1200 employees dedicated to R&D

11,000 + issued and pending patents

1933 High-precision X-ray timer

Inspired by a friend, Omron founder Kazuma Tateisi developed a high-precision timer for X-ray photography.

1960 Solid-state proximity switch

In response to market demands, Omron created a contactless (solid-state) switch which far exceeded customer expectations.

1964 Automated traffic signal

Omron installed the world's first traffic-responsive electronic road signal in Tokyo to help ease congestion and prevent accidents.

1987 Ultra-high-speed fuzzy logic controller

Omron adopted fuzzy logic as a core technology, and in 1987 launched the fastest ever fuzzy controller.

2007 Face-recognition technology

Omron's unique sensing system inspired the face-recognition technology

2011 Sysmac machine controller

One controller, one piece of software, and one machine network are integrated to enable next-generation machine automation.



HH

Human.
Working for the benefit of society

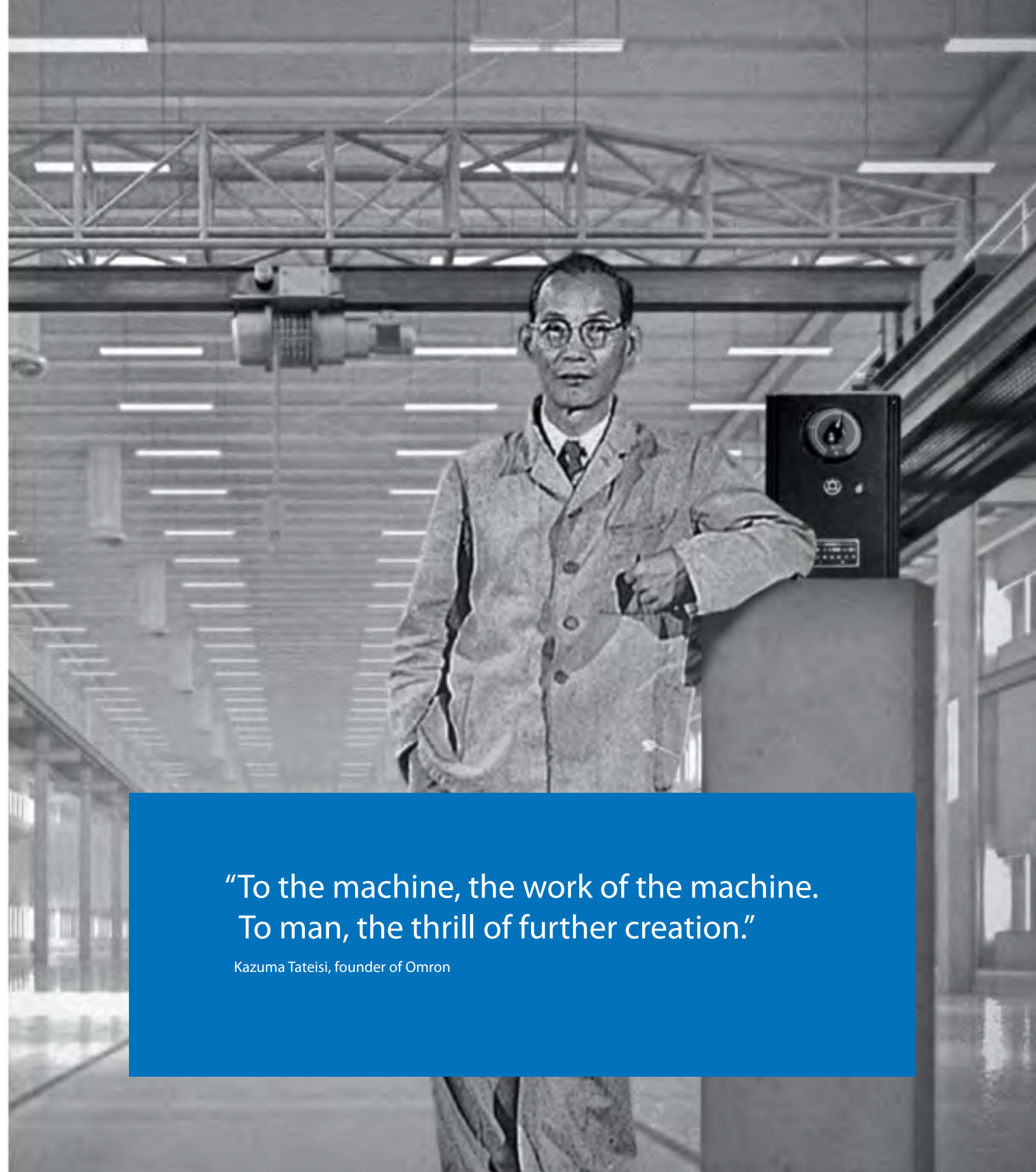
Contributing to a sustainable society by weighing the economic, environmental, and social impact of our actions.

1970

The Sinic Theory

First proposed by Omron's founder Kazuma Tateisi in 1970, SINIC theory defines how society, science and technology mutually impact and influence each other. Science enables new technology that helps society; while society's needs encourage both technological developments and scientific discovery. It's a dialogue that continues to this day, underpinning relationships between us and our customers, between engineers and end-users, machine-makers and consumers. It fires our imagination, and enables your creativity.

▶ omron.me/omr_sinic



**“To the machine, the work of the machine.
To man, the thrill of further creation.”**

Kazuma Tateisi, founder of Omron

Technology

for large scale changes
in society

We boldly continue to take on new challenges that address global issues, as we strive to be a company that people around the world require. Look forward to tomorrow's endeavors. And expect much.





Adapting to urbanisation

Growing quality requirements for food and pharmaceuticals need refined packaging and materials handling.



Adapting to population growth

Demand for technology, consumer goods and energy creates a continuously growing need in energy markets.



Adapting to clean energy demands

By engineering low energy footprint machines and supporting processes.



Adapting to personal safety

Products and services that keep people safe at work.

Complete portfolio for machine automation

200,000 products delivering
Input, Logic and Output

We have everything you need for machine automation: Sensing, Control Systems, Visualization, Drives, Robots, Safety, Quality Control and Inspection, Control and Switching Components.

No-one else in the market can match this seamless input>logic>output technology, delivering connectivity that's reliable, fast and completely transparent. High performance, effortless integration, total safety and the fastest time from concept to market.

Input

Matchless application know-how

Sensing technology, from basic switches to advanced vision systems, detection, quality control and inspection through solid expertise in technology and proven application know-how.



Logic

Machine control and motion control are one

Our controllers, the core of any automation solution: control of sequencing, motion, temperature, networking, safety and vision, either dedicated or integrated in the Sysmac machine controller.



Output

Fast, flexible, versatile and totally reliable

From relays to a high-accuracy servo drives, we transform your control system logic into action.





Software

Control, configure and visualise the entire machine with a single software tool that gives power and efficiency to develop and create like never before.

Connectivity

Open networks: Profibus, DeviceNet, Profinet, CANopen, Comconet, Modbus, Mechatrolink II, Compobus/S

EtherCAT[®]
Technology Group



Lean.

A true customer focused approach
to manufacturing



Low Cost Intelligent Automation

From 35 days to less than 5 days make-to-order
An average of 0.02 defects
Employee productivity increase by 60 %



Customisation

**If our standard range of 200,000 products doesn't
meet your needs simply ask.**

1-3 weeks for minor changes to existing products
6-10 weeks for customized products
Ad hoc projects for customer specific products



95% of your demand delivered from stock

Everywhere in Europe within 2 days

Our engineers

...knowledgeable, experienced and above all involved. Every day, they make the difference. If you have a design challenge, they will find the answer; if you have a control issue, they will help you solve it; if you want to manufacture in a different country, they will connect you to our expert in this field.



“Our equipment and systems are an essential part of the total machine, they are vitally important. Visual inspection, motion control, process control, safety – these are what keeps production running, and ensures quality throughout the machine lifecycle. My job is to make sure that my customers get the best, every time.”

Ben van Boxtel, Engineer

365

days a year we develop
new and innovative machines with you



We make your bright ideas even brighter

Automation Technology Center, Barcelona

Talk to best-of-breed engineers, try out the latest applications, test your new ideas. Every year we organize more than 200 workshops.



Tsunagi connectivity labs

We've made inter-operability issues a thing of the past

The specialist engineers in our Tsunagi Labs will ensure that multi-vendor solutions are supported by achieving compliance to open standards. Available in: Shanghai (CN), Den Bosch (NL), Kyoto (JP)



myOmron.com

Your international online community

Open to everyone in the industrial marketplace, 25,000 registered users, 2200 FAQs, 24h response time, support in your local language.

Benefits of a true global network

Global
37,000 employees, 160 + offices

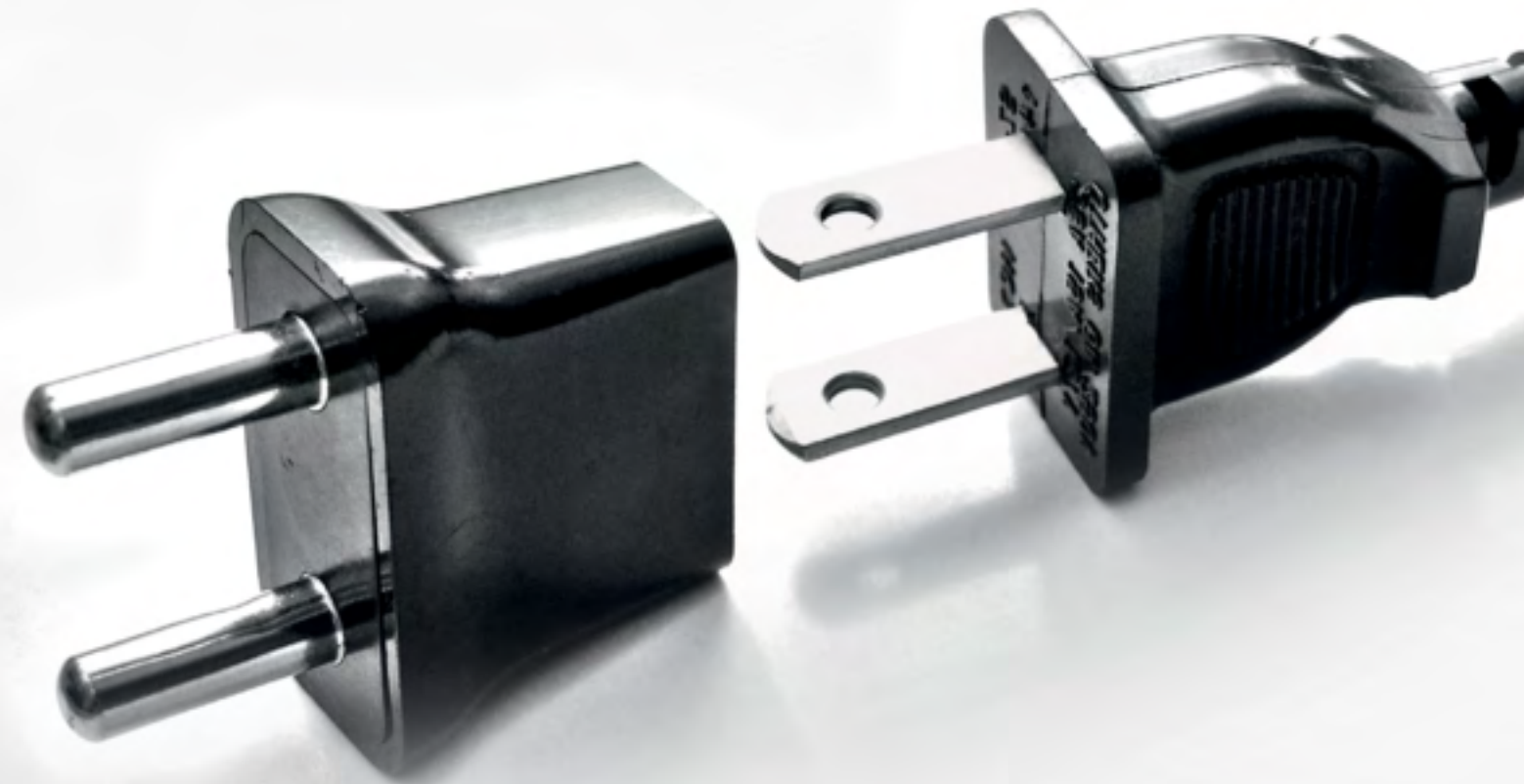
Providing you with the support you need to operate globally

- Global product availability
- R&D based on worldwide requirements
- Global pricing terms
- Global support and services structure

EMEA
1500 employees, in 22 countries

Understanding local markets and requirements

- Adaptation of production for local needs
- Logistic Structure
- Manufacturing
- Repair Center
- Research & Development



Local support

We are close to your factories and customers with empowered engineers.
Global scale, local & market knowledge at your command anywhere.



EMEA presence

22 countries
350 Field engineers
250 Application engineers

- Sales & Support office
- Factory
- R&D
- ▲ European Distribution Centre
- ★ Automation Technology Centre
- Headquarter Omron Europe

Sub Sahara West

Cape Town

Sub Sahara East

Dubai
Egypt
Kuwait
Yemen

Kazakhstan

Alesund

Oslo

Stavanger

Arhus

Malmo

Copenhagen

Milton Keynes

Amsterdam

Hamburg

Berlin

Espoo

Riga

Moscow

Vilnius

Minsk

Southampton

Den Bosch

Warsaw

Krakow

Paris

Nufringen

Munich

Prague

Kiev

Lyon

Lausanne

Zagreb

Vienna

Budapest

Porto

Vitoria

Barcelona

Terni

Milan

Belgrade

Bucharest

Lisbon

Madrid

Valencia

Seville

Sofia

Istanbul

Algiers

Tunis

Athens

How can we improve your business?

 +31 (0) 23 568 13 00

 industrial.omron.eu

Join our online conversation

Follow Omron on Twitter or Facebook, join us on LinkedIn, and watch the Omron channel on YouTube. And don't miss the Omron blog site on which we share behind the scenes stories about the automation business.

Anything you need to know about machine automation, contact Omron: together, we create tomorrow.

 twitter.com/omroneurope

 youtube.com/user/omroneurope

 linkedin.com/company/omron

 blog.omron.eu

