

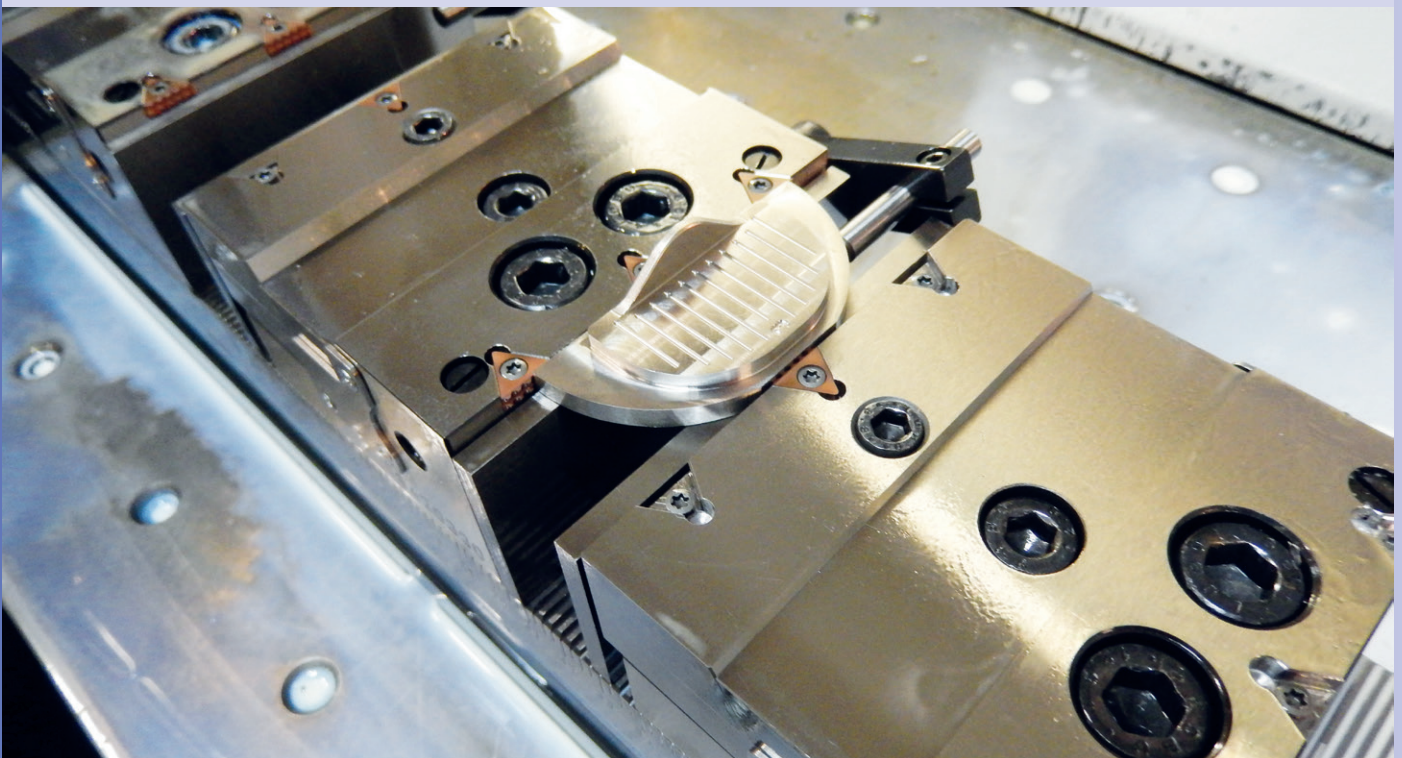


Multiple clamping systems from SMW-AUTOBLOK

Advantages for the user:

- Best use of the machine table
- Wide range of standard accessories
- Highest efficiency due to rapid set-up times
- Maximum flexibility: can be used for single or multi clamping on the machine table and also on tombstones

SMW-AUTOBLOK offers two different multiple clamping systems: CV with serration 2.5 x 60° and TB with serration 2.0 x 60°. Both of these multiple clamping systems come with different jaw widths and lengths. For the CV system, the "CLAK-SYSTEM" quick change system for jaws and parallels is available as an option. The user can also clamp safe raw parts using jaws fitted with SinterGrip clamping inserts (see photo).



Multiple Clamping System



Page 130

CV

Serration 2.5 x 60°

Multiple clamping system

- Quick change system „CLAK-SYSTEM“ for jaws and parallels optional available



Page 138

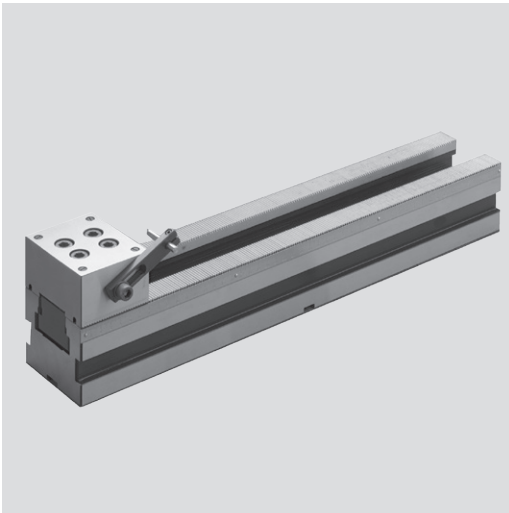
TB

Serration 2.0 x 60°

Multiple clamping system

- Excellent price-performance ratio

- Serration 2.5x60°
- Quick change system „CLAK-SYSTEM“ optional available



Application/customer benefits

- Full usability of the machine table
- Modular system: extensive range of accessories
- Quick change system „CLAK-SYSTEM“ for jaws and parallel claks optional available
- Maximum efficiency due to quick change over
- Can be used for single or multiclamp

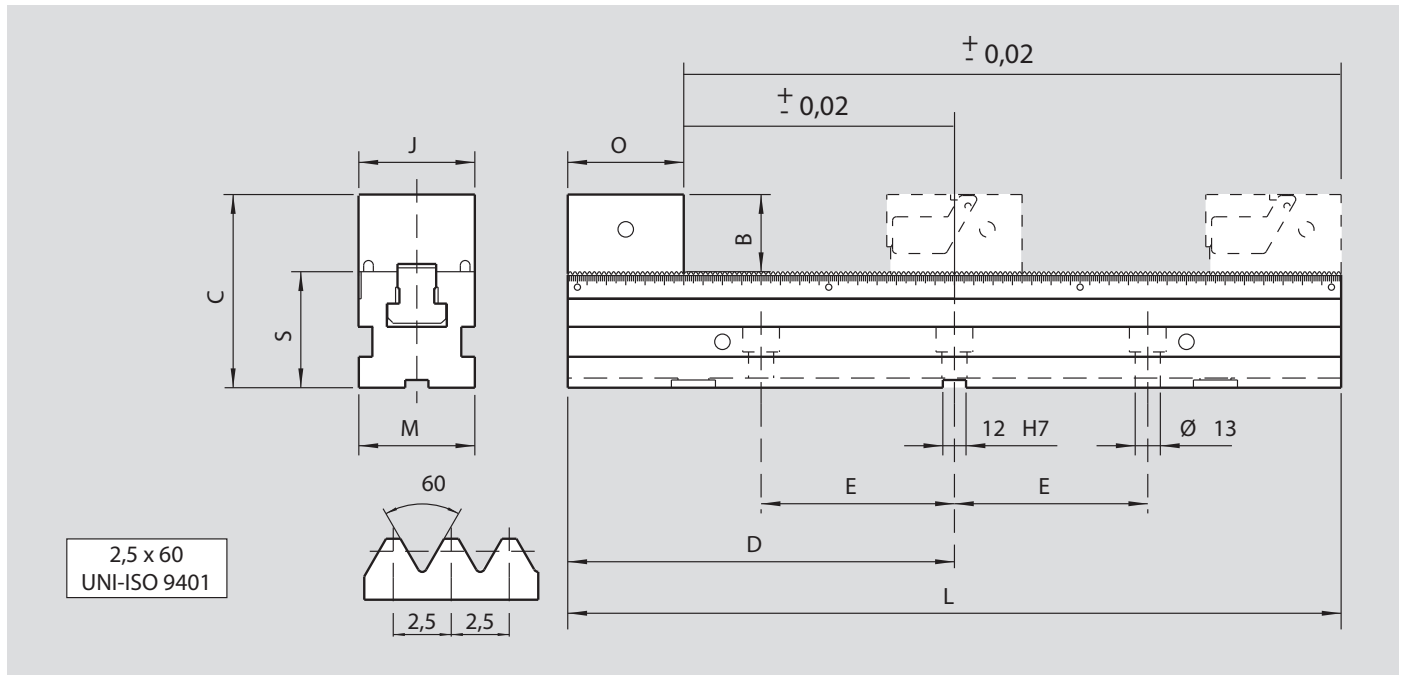
Technical features

- Serration 2.5x60°
- Jaw width 38 mm, 60 mm und 90 mm, Length 250 mm, 400 mm, 500 mm and 630 mm
- Optional: interfaces for zero point clamping system APS/WPS (on request)

Standard equipment

Multiple clamping system:
Base, fix jaw, 1 pair of positioning keys, clamping wrench, workstop

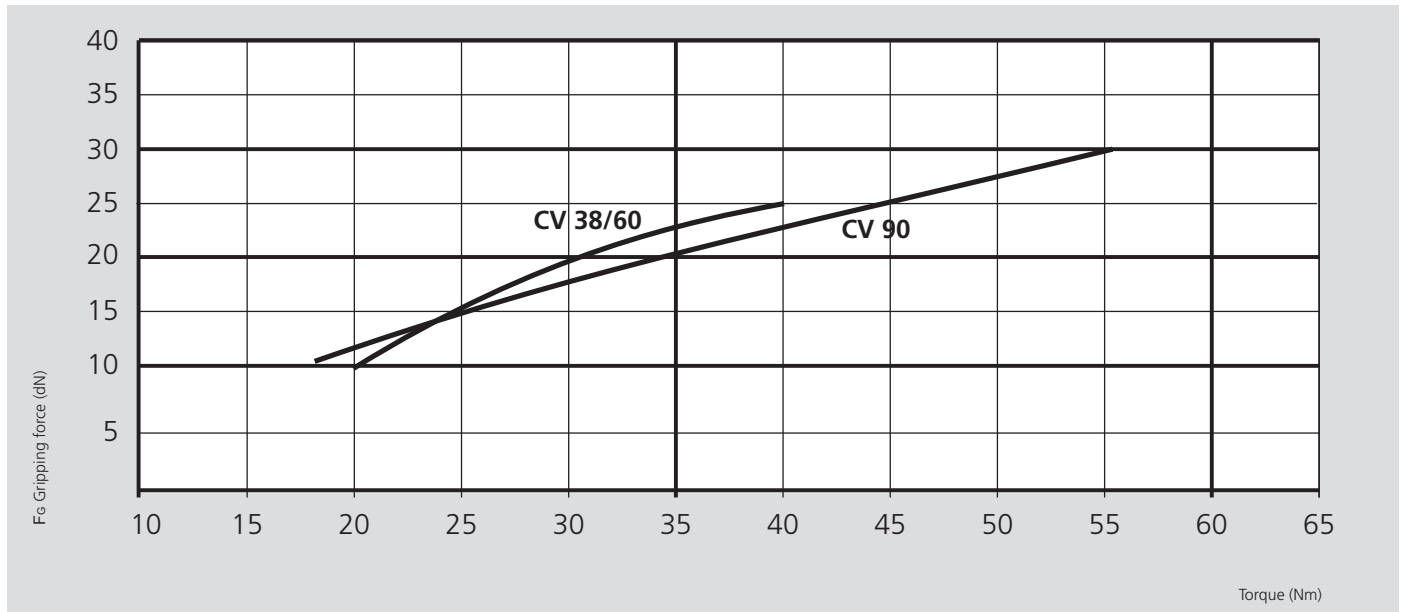
Technical data



Type	Id. No.	B mm	C mm	D mm	E mm	J mm	L mm	M mm	O mm	S ±0.01 mm	Weight kg
CV 38-250	462003	40	100	125	100	38	250	60	60	60	6
CV 38-400	462000			200	100		400				9
CV 38-500	462001			250	150		500				11
CV 38-630	462002			315	200		630				13
CV 60-250	462007	40	100	125	100	60	250	60	60	60	6.5
CV 60-400	462004			200	100		400				9.5
CV 60-500	462005			250	150		500				11.5
CV 60-630	462006			315	200		630				13.5
CV 90-250	462011	45	115	125	100	90	250	90	70	70	11
CV 90-400	462008			200	100		400				16
CV 90-500	462009			250	150		500				19.5
CV 90-630	462010			315	200		630				23.5

- Serration 2.5x60°
- Quick change system „CLAK-SYSTEM“ optional available

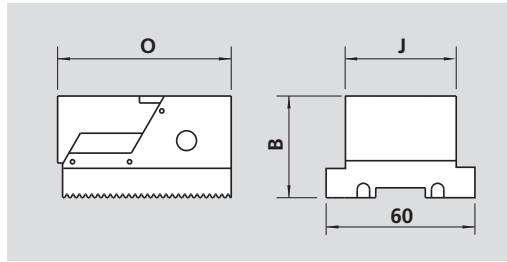
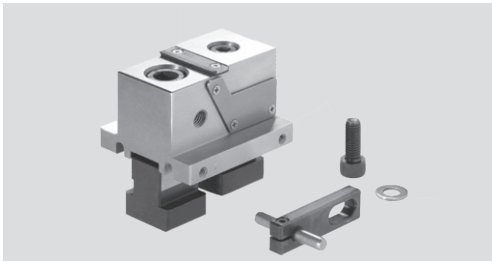
Clamping force diagrams



Clamping capacity

Type	A max. mm			
	Diagram 1	Diagram 2	Diagram 3	Diagram 4
CV 38-250	120	25	-	-
CV 38-400	270	100	43	15
CV 38-500	370	150	76	40
CV 38-630	500	215	120	73
CV 60-250	120	25	-	-
CV 60-400	270	100	43	15
CV 60-500	370	150	76	40
CV 60-630	500	215	120	73
CV 90-250	99	-	-	-
CV 90-400	249	84	29	-
CV 90-500	349	134	62	26
CV 90-630	479	199	106	59

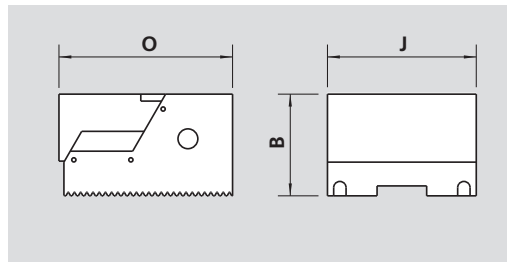
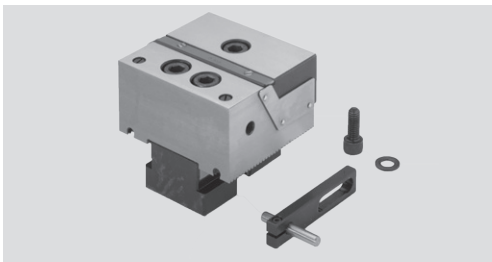
Adjustable jaw with pull down, smooth, Set



Consisting of:
Adjustable jaw smooth
incl. workstop

Type	Id. No.	B mm	J mm	O mm	Weight kg
CV 38	462016	40	38	70	1

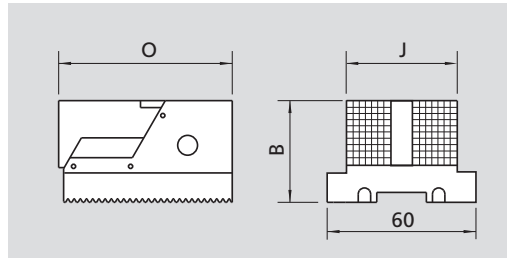
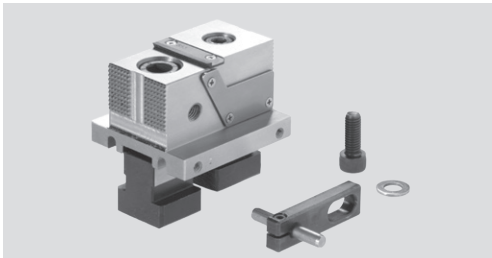
Adjustable jaw with pull down, smooth, Set



Consisting of:
Adjustable jaw smooth
incl. workstop

Type	Id. No.	B mm	J mm	O mm	Weight kg
CV 60	462012	40	60	70	1.4
CV 90	462014	45	90	80	2.9

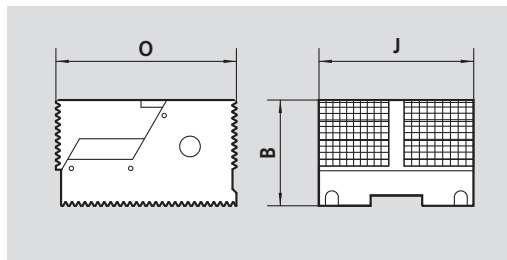
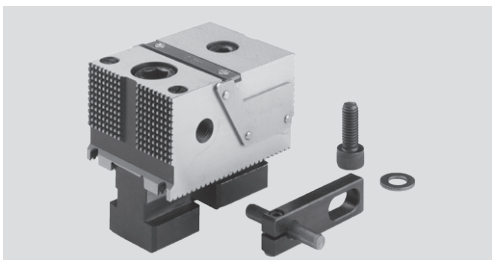
Adjustable jaw with pull down, grooved, Set (for raw workpieces)



Consisting of:
Adjustable jaw grooved
incl. workstop

Type	Id. No.	B mm	J mm	O mm	Weight kg
CV 38	462017	40	38	70	1

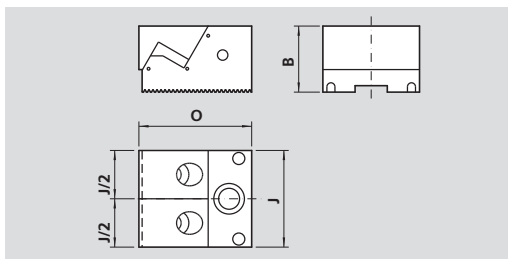
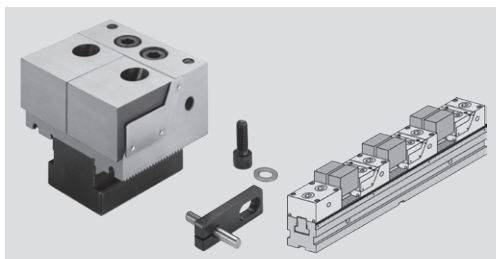
Adjustable jaw with pull down, grooved, Set (for raw workpieces)



Consisting of:
Adjustable jaw grooved
incl. workstop

Type	Id. No.	B mm	J mm	O mm	Weight kg
CV 60	462013	40	60	70	1.4
CV 90	462015	45	90	80	2.9

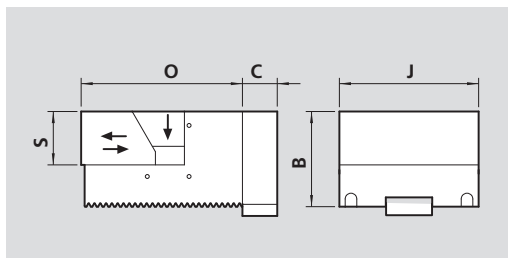
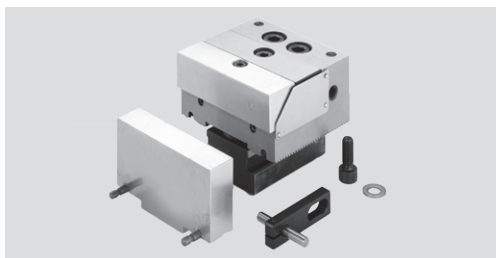
Adjustable jaw double with pull down, smooth, Set



Consisting of:
Adjustable jaw double smooth
incl. workstop

Type	Id. No.	B mm	J mm	O mm	Weight kg
CV 60	462018	40	60	70	1.5
CV 90	462022	45	90	80	3

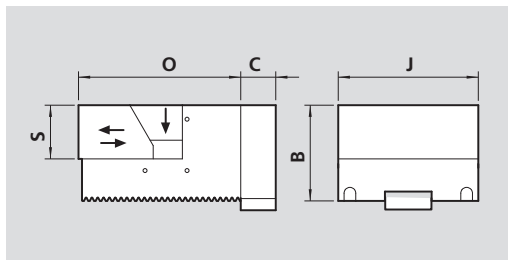
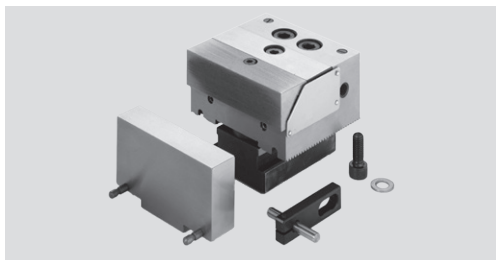
Adjustable jaw with aluminium-clamping inserts, Set



Consisting of:
Adjustable jaw with
aluminium-clamping inserts
incl. workstop

Type	Id. No.	B mm	C mm	J mm	O mm	S mm	Weight kg
CV 60	462019	40	15	60	69.5	23	1.2
CV 90	462023	45	20	90	80	25	2.7

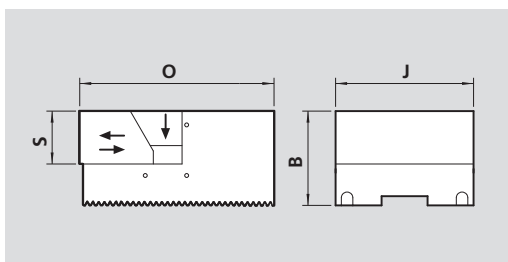
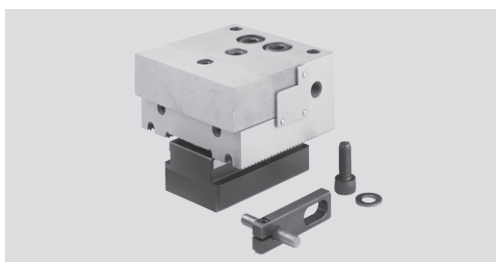
Adjustable jaw with soft steel-clamping inserts, Set



Consisting of:
Adjustable jaw with soft
steel-clamping inserts
incl. workstop

Type	Id. No.	B mm	C mm	J mm	O mm	S mm	Weight kg
CV 60	462020	40	15	60	69.5	23	1.4
CV 90	462024	45	20	90	80	25	3

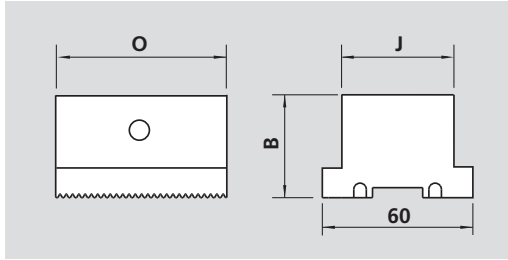
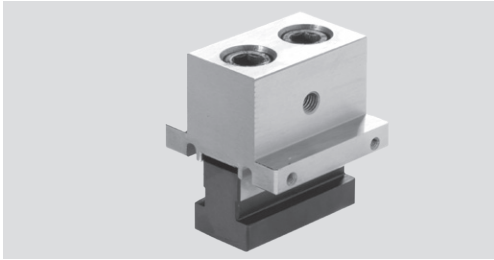
Adjustable jaw with hard steel-clamping inserts, Set



Consisting of:
Adjustable jaw with hard
steel-clamping inserts
incl. workstop

Type	Id. No.	B mm	J mm	O mm	S mm	Weight kg
CV 60	462021	40	60	69.5	23	1.4
CV 90	462025	45	90	80	25	3

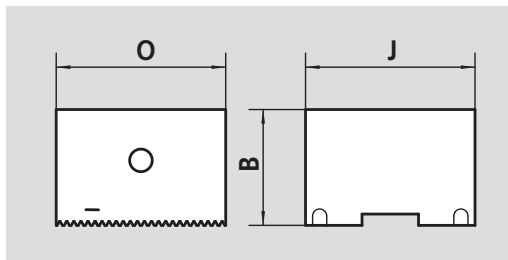
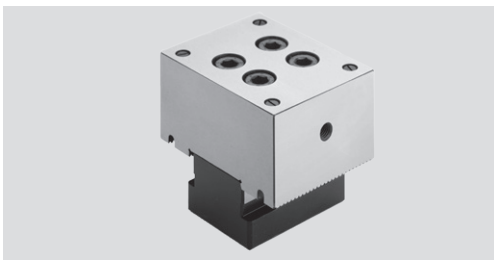
Fix jaw with T-nut, Set



Consisting of:
Fix jaw with T-nuts
workstop

Type	Id. No.	B mm	J mm	O mm	Weight kg
CV 38	462050	40	38	60	1

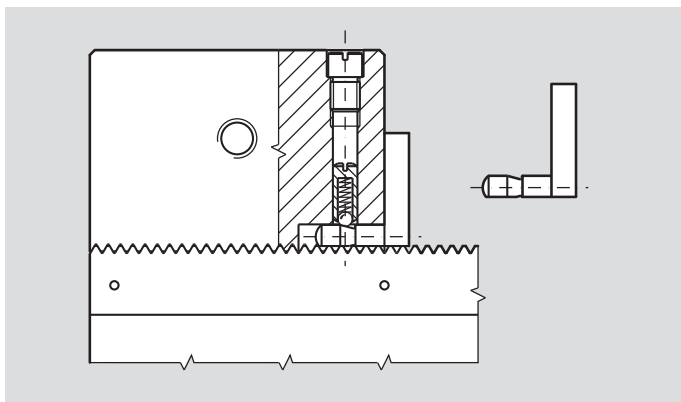
Fix jaw with T-nut, Set



Consisting of:
Fix jaw with T-nuts
workstop

Type	Id. No.	B mm	J mm	O mm	Weight kg
CV 60	462048	40	60	60	1.4
CV 90	462049	45	90	70	2.9

CLAK-SYSTEM: Quick change for multiple clamping system CV



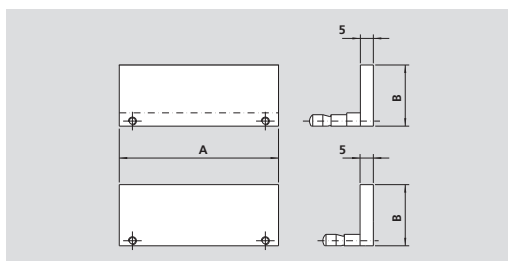
The exclusive and proven CLAK-SYSTEM, for the quick change of parallels and jaws has been applied for use with the CV. The CLAK-SYSTEM ensures highest repeatability and minimum set-up times.

This equipment offers:

- The quick change of parallels and jaws
- The elimination of clamps and locks thanks to the patented selflocking system
- The increase in accuracy

All components are heat treated and precision ground.

Parallels with quick change „CLAK-SYSTEM“, Set

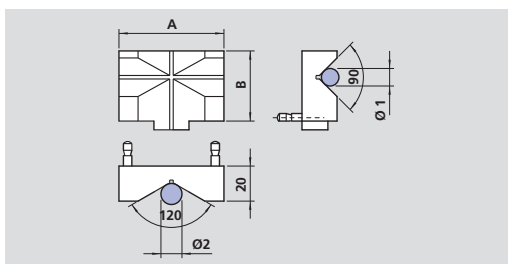


Consisting of:

4 pair of parallels with quick change „CLAK-SYSTEM“

Type	Id. No.	A mm	B mm				Weight kg
CV 38	462051	38	18	23	28	37	0.4
CV 60	462052	60	18	23	28	37	0.49
CV 90	462053	90	18	23	33	42	0.77

Prism jaw with quick change „CLAK-SYSTEM“

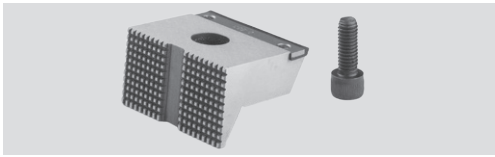


Consisting of:

Prism jaw with quick change „CLAK-SYSTEM“

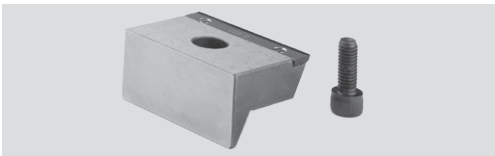
Type	Id. No.	A mm	B mm	Ø 1		Ø 2	
				min. mm	max. mm	min. mm	max. mm
CV 38	462054	38	40	10	24	9	45
CV 60	462055	60	40	10	28	11	70
CV 90	462056	90	45	10	28	11	70

Clamping insert, hard, serrated



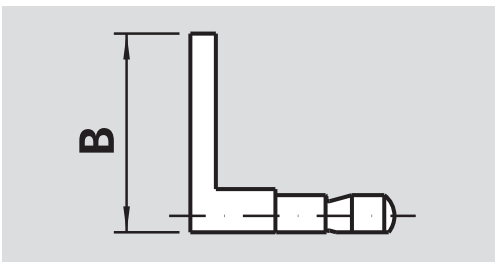
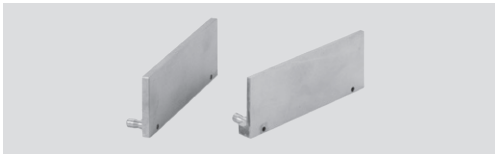
Type	Id. No.
CV 38	462026
CV 60	462027
CV 90	462028

Clamping insert, hard, smooth



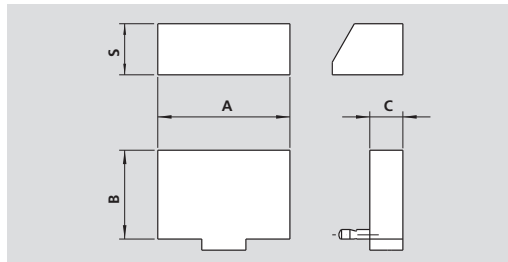
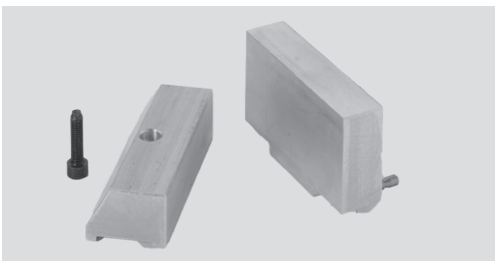
Type	Id. No.
CV 38	462029
CV 60	462030
CV 90	462031

Pair of parallels, with quick change „CLAK-SYSTEM“



Type	Id. No.	B mm
CV 38	462032	18
CV 38	462033	23
CV 38	462034	28
CV 38	462035	37
CV 60	462036	18
CV 60	462037	23
CV 60	462038	28
CV 60	462039	37
CV 90	462040	18
CV 90	462041	23
CV 90	462042	33
CV 90	462043	42

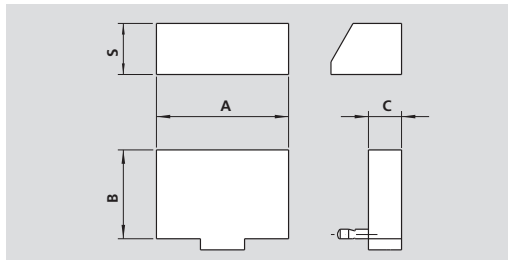
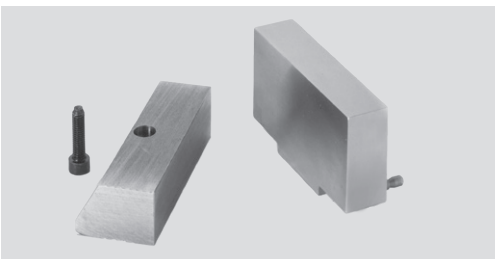
Pair of parallels, soft, in aluminium, with quick change „CLAK-SYSTEM“



Consisting of:
pair of soft clamping inserts in aluminium, with jaw quick change „CLAK-SYSTEM“

Type	Id. No.	A mm	B mm	C mm	S mm	Weight kg
CV 60	462044	60	40	15	23	0.19
CV 90	462045	90	45	20	25	0.4

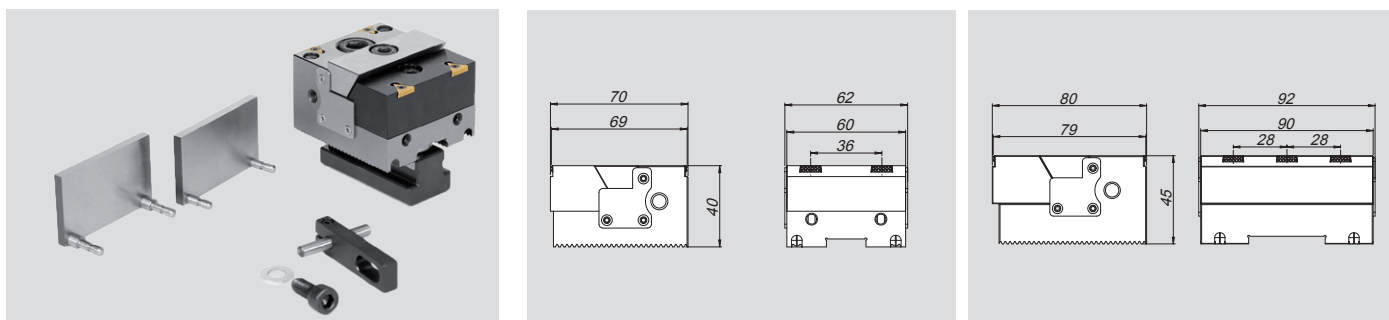
Pair of clamping inserts, soft, in steel, with quick change „CLAK-SYSTEM“



Consisting of:
pair of soft clamping inserts in steel, with jaw quick change „CLAK-SYSTEM“

Type	Id. No.	A mm	B mm	C mm	S mm	Weight kg
CV 60	462046	60	40	15	23	0.58
CV 90	462047	90	45	20	25	1.2

Adjustable jaw for SinterGrip Clamping Inserts, Set



Type	Id. No.
CV 60	462101
CV 90	462102

Consisting of:

Adjustable jaw, 4 pieces SinterGrip clamping inserts for steel (STD), workstop, 1 pair parallels (CLAK-SYSTEM) height 37 mm for CV60, height 42 mm for CV 90

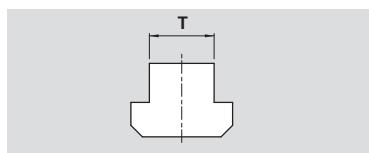
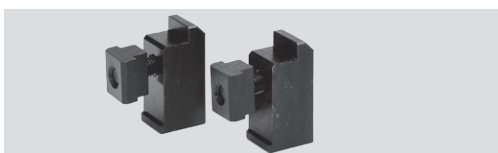


Workstop



Type	Id. No.
CV 38/60	462098 for fixed support
CV 90	462099 for fixed support
CV 38/60/90	462100 for movable support

Pair of clamps

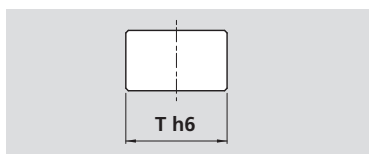
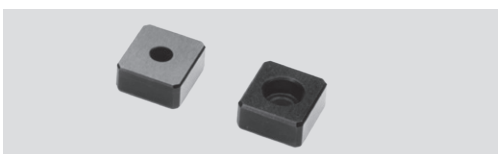


Consisting of:

Pair of clamps complete with screw and T-nut

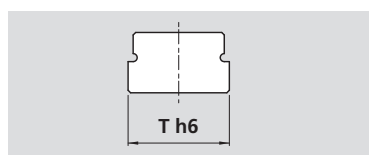
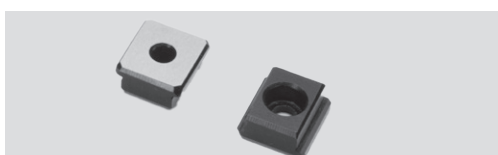
Type	Id. No.						
	T	12 mm	14 mm	16 mm	18 mm	20 mm	22 mm
CV 38/60		462086	462087	462088	462089	462090	462091
CV 90		462092	462093	462094	462095	462096	462097

Pair of standard positioning keys



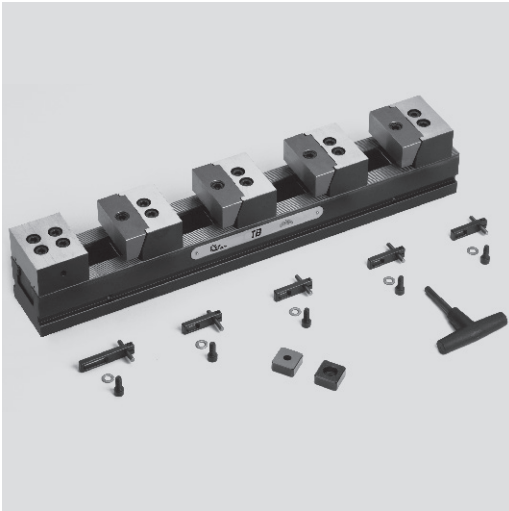
Type	Id. No.	T h6 mm
CV 38/60	462057	12
CV 90	462057	12

Pair of special positioning keys with special dimensions



Type	Id. No.						
	Th6	12 mm - h6	14 mm - h6	16 mm - h6	18 mm - h6	20 mm - h6	22 mm - h6
CV 38/60		-	462058	462059	462060	462061	462062
CV 90		-	462058	462059	462060	462061	462062

- Serration 2.0x60°
- Excellent price/ performance ratio



Application/customer benefits

- Full usability of the machine table
- Modular system: extensive range of accessories
- Maximum efficiency due to quick change over
- Can be used for single or multiclamp
- Set with 4 clamping positions

Technical features

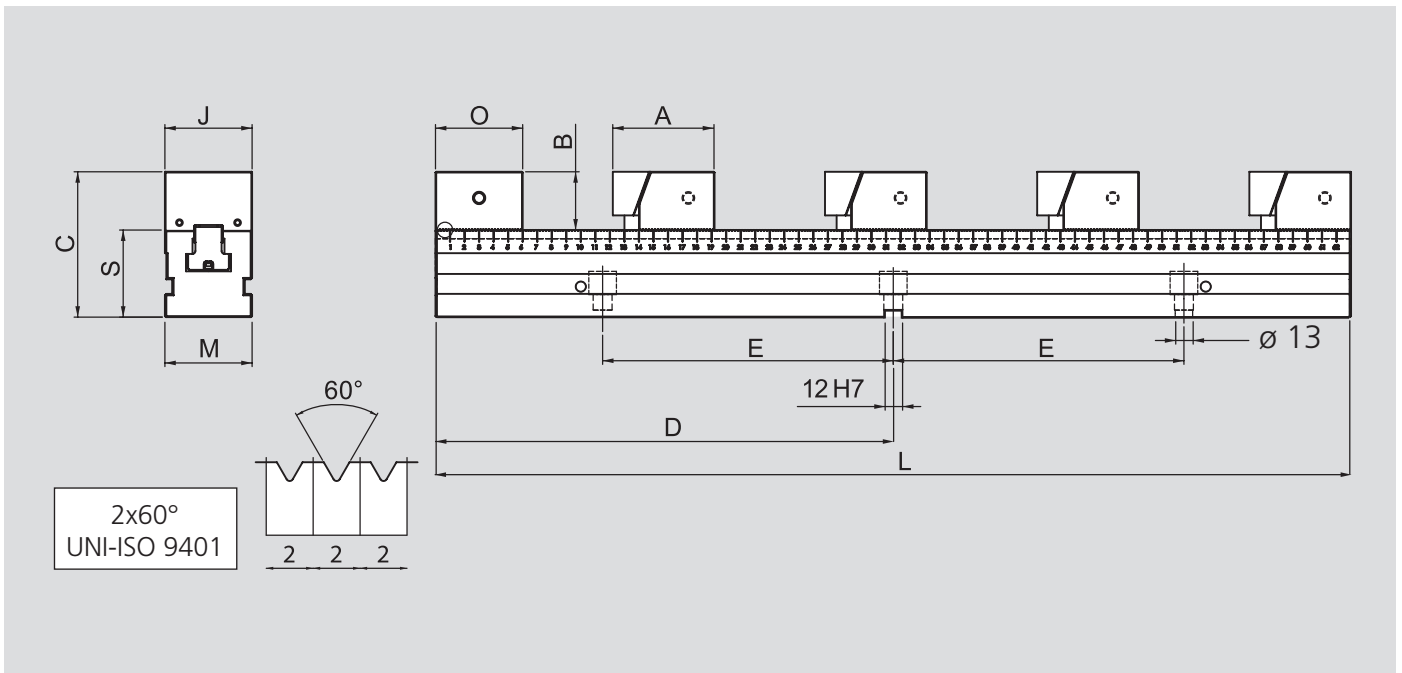
- Serration 2.0x60°

Standard equipment

Multiple clamping system set:

- 1 Base (different sizes)
- 1 Fix jaw
- 4 Movable jaws
- 4 Workstops
- 1 Clamping wrench

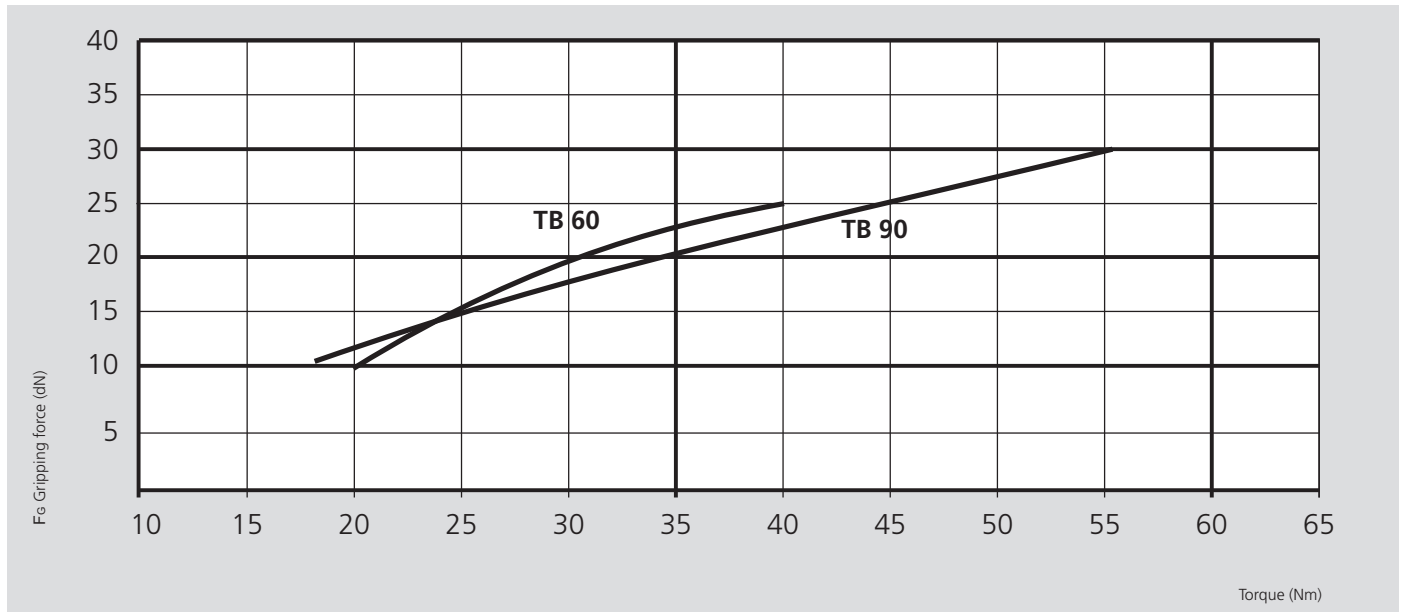
Technical data



Type	Id. No.	A mm	B mm	C mm	D mm	E mm	J mm	L mm	M mm	O mm	S ±0.01 mm	Weight kg
TB 60-400	462063	70	40	100	200	100	60	400	60	60	60	16.9
TB 60-500	462064				250	150		500				18.9
TB 60-630	462065				315	200		630				22.0
TB 90-400	462066	80	45	115	200	100	90	400	90	70	70	27.6
TB 90-500	462067				250	150		500				32.8
TB 90-630	462068				315	200		630				36.7

- Serration 2.0x60°
- Excellent price/ performance ratio

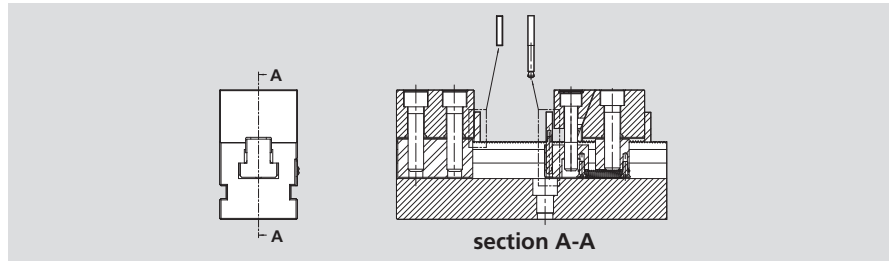
Clamping force diagrams



Clamping capacity

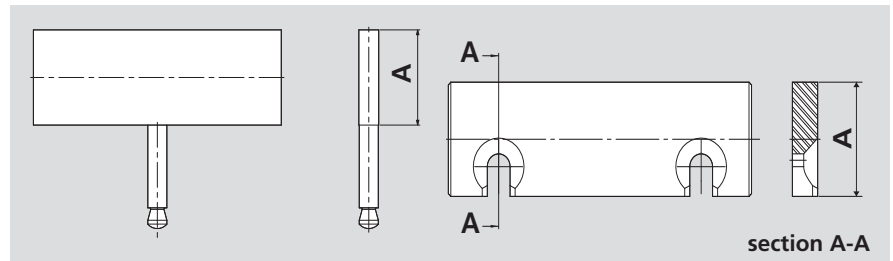
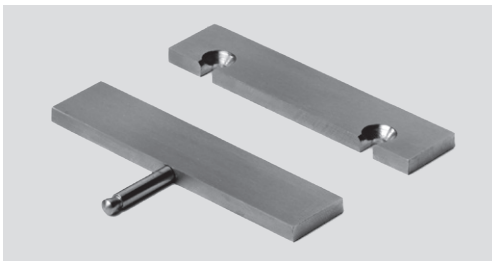
Type	A max. mm			
	1	2	3	4
TB 60-400	270	100	43	15
TB 60-500	370	150	76	40
TB 60-630	500	215	120	73
TB 90-400	249	84	29	-
TB 90-500	349	134	62	26
TB 90-630	479	199	106	59

4 Pairs of TB Parallels Set



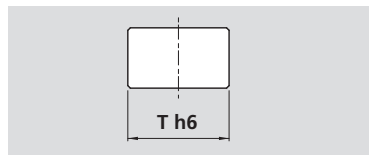
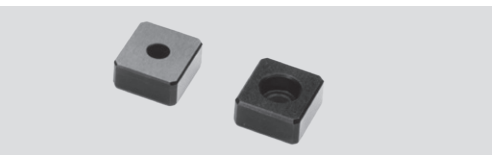
Type	Id. No.	Weight kg
TB 60	462077	0.4
TB 90	462078	0.7

1 Pair of TB Parallels



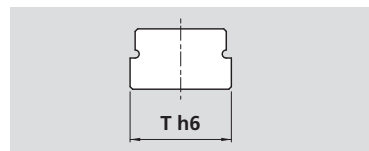
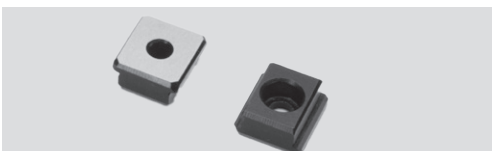
Type	Id. No.	A mm
TB 60	462069	18
TB 60	462070	23
TB 60	462071	28
TB 60	462072	37
TB 90	462073	18
TB 90	462074	23
TB 90	462075	33
TB 90	462076	42

1 Pair of T-nuts



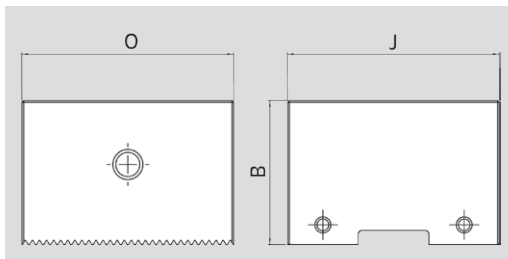
Type	Id. No.	T h6 mm
TB 60	462057	12
TB 90	462057	12

1 Pair of T-nuts with special dimensions



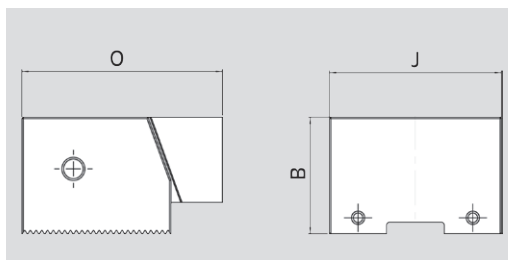
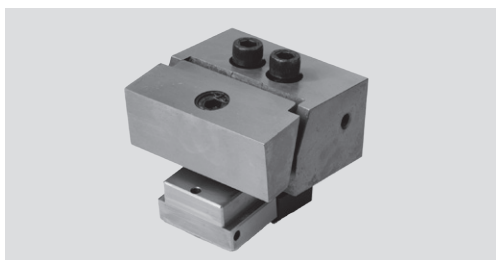
Type	Th6	Id. No.					
		12 mm - h6	14 mm - h6	16 mm - h6	18 mm - h6	20 mm - h6	22 mm - h6
TB 60	-	462058	462058	462059	462060	462061	462062
TB 90	-	462058	462058	462059	462060	462061	462062

Fix jaw Set



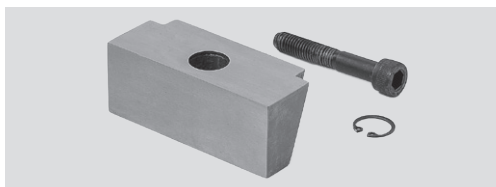
Type	Id. No.	B mm	J mm	O mm	Weight kg
TB 60	462082	40	60	70	1.3
TB 90	462084	45	90	80	2.8

Adjustable jaw with pull down, Set, smooth



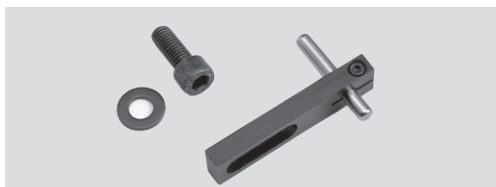
Type	Id. No.	B mm	J mm	O mm	Weight kg
TB 60	462079	40	60	70	1.4
TB 90	462080	45	90	80	3

Clamping insert smooth



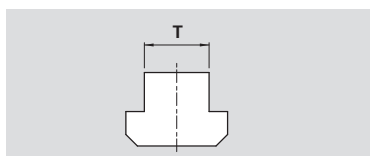
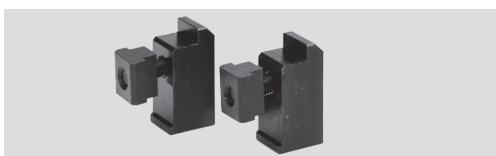
Type	Id. No.
TB 60	462081
TB 90	462083

Workstop



Type	Id. No.
TB 60	462098 fixed
TB 90	462099 fixed
TB 60/90	462100 movable

Pair of clamps, incl. T-nut and clamping screw



Type	Id. No.					
	12 mm	14 mm	16 mm	18 mm	20 mm	22 mm
TB 60	462086	462087	462088	462089	462090	462091
TB 90	462092	462093	462094	462095	462096	462097