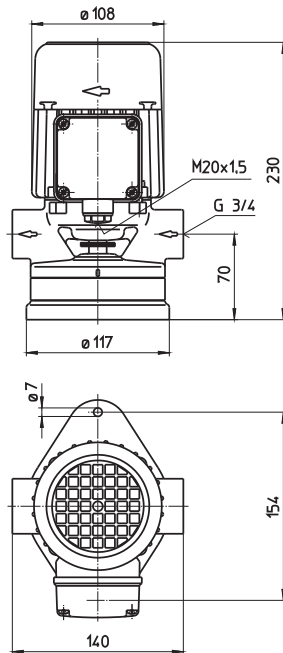


# Suction Pumps

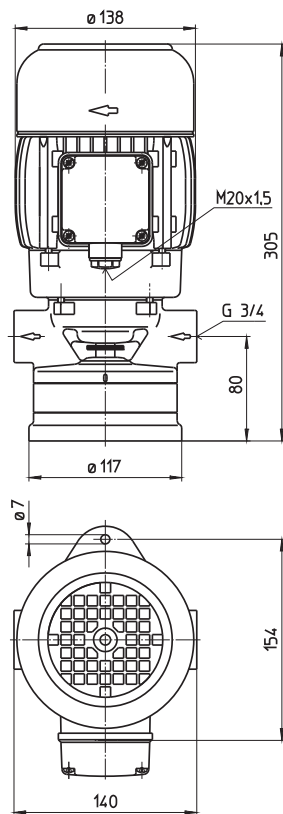
## SB20...60

### Open impellers

#### SB20, 40



#### SB60



Type	Vol. del. at manom. del. head l/min /m	Weight kg	Power kW	Voltage 3~ V	Fre- quen- cy Hz	Current A	Speed 1/min
<b>SB20</b>	20/2	5.5	0.14	220-240	50	0.71	2700
				380-420	50	0.41	2700
				460	60	0.41	3200
<b>SB40</b>	40/2	6.5	0.22	220-240	50	0.95	2700
				380-420	50	0.55	2700
				460	60	0.55	3200
<b>SB60</b>	47/2	10	0.63	220-240	50	2.6	2750
				380-420	50	1.5	2750
				460	60	1.5	3250



### Suction Pumps

are self-priming following the initial priming, and operate according to the bypass duct principle. We recommend pump models featuring bronze body elements for pumping water without anti-corrosion additives.

The dimensions are based on standard specification EN 12157.

### Applications

Types of fluid  
 coolants  
 cooling/cutting oils  
 fuel oil  
 water (with anticorrosive additive)

Kinematic viscosity  
 ...60 mm<sup>2</sup>/s (60 cSt)

Pumping temperature  
 0...80° C

Suction height  
 1 - 2 m without foot-located valve  
 4 - 6 m with foot-located valve

### Construction

Pump body	cast iron
Cover	cast iron
Impeller	brass
Shaft	steel
Mechanical seal	graphite based
O-rings	Viton

Optional:	
Pump body	bronze (SB20...SB40)
Cover	bronze (SB20...SB40)
Impeller	CrNi-steel

Noise level	
SB20...SB40	54 dBA
SB60	64 dBA

