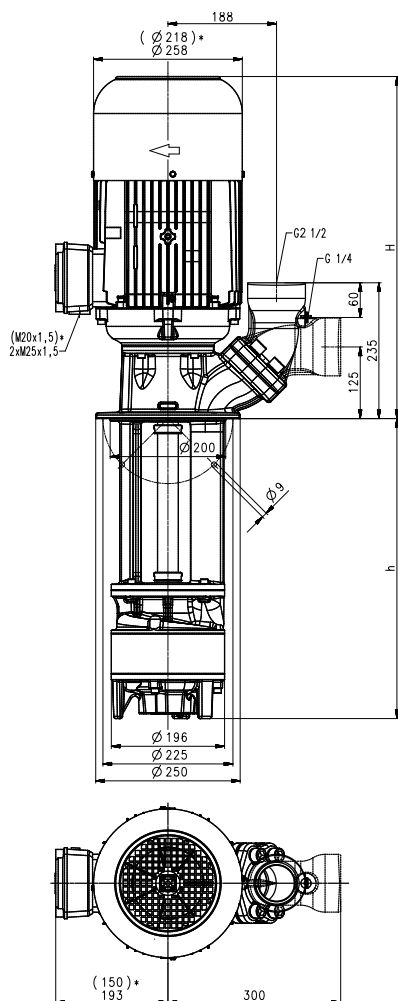


Quick Suctioning Immersion Pumps

SZG701...1002

Axial/open impellers

SZG701...1002



*) Dimensions for SZG701, 1001

Type	Vol. del. at manom. del. head l/min /m	Height H mm	Depth of im- mersion h mm	Weight kg	Power kW	Voltage 3~ V	Fre- quen- cy Hz	Current A	Speed 1/min
SZG701/220	300/15	503	220	66	3.3	220-240	50	11.6	2930
	320		320	69					
	450		450	73	3.8	460	60	6.4	3520
	570		570	77					
	770		770	89					
	1000		1000	95					
SZG1001/220	500/15	533	220	73	5.0	220-240	50	17.3	2920
	320		320	76					
	450		450	80	5.75	460	60	9.5	3520
	570		570	84					
	770		770	96					
	1000		1000	102					
SZG702/290	300/29	612	290	112	7.5	380-415	50	14.3	2950
	390		390	116					
	520		520	119	8.6	460	60	13.7	3550
	640		640	122					
	840		840	141					
	1070		1070	147					
SZG1002/290	500/30	612	290	119	9.0	380-415	50	16.7	2955
	390		390	122					
	520		520	126	10.3	460	60	15.8	3550
	640		640	130					
	840		840	142					
	1070		1070	149					

Quick Suctioning Immersion Pumps

series SZG equipped with the patented "BRINKMANN`s Suction De-aeration System" are excellently suited to pumping **fluids** (grinding oils) with **very high air entrainment** as they occur in **high-speed grinding**.

The quick suctioning immersion pumps reach stable working conditions as soon as the liquid level reaches the suction inlet.

The SZG serie offers a **flange** with pressure gauge connection port.

The flange can be rotated for either horizontal or vertical pipe connections.

Applications

- Types of fluid
 - grinding oils
 - cooling/cutting oils
 - coolants
- Kinematic viscosity
 - ...45 mm²/s (45 cSt)
- Pumping temperature
 - 0...80° C

Construction

- | | |
|-----------------|------------|
| Pump body | cast iron |
| Cover | cast iron |
| Impeller axial | cast steel |
| Impeller radial | cast steel |
| Shaft | steel |

