

# Technical Data Sheet



## UNDERBODY HYDRAULIC HOISTS

### Underbody Hydraulic Hoist Cylinders

The UBB and UBE series hoist is manufactured from the highest quality hot rolled seamless tube, machined to exacting tolerances. They are designed for the most demanding applications for tipper bodies on both trucks and trailers.

#### Suits:

Ideal for rear, side or 3 way tipping applications. These hoists can be used for payloads up to 28 tonnes.

## Product Features

- **Compact Size**  
Easily installed under tipper body.
- **All Stages are Chrome Plated**  
Increases working life.
- **Quality Delrin Bearings**  
To ensure long life and trouble free operation.
- **Quality Polyurethane Seals**  
Resist distortion to provide a long life.
- **Upper and Lower Stops Machined On the Tubes**  
To provide reliable service.

POW AUTO

DAVID BROWN  
HYDRAULICS

HYDRECO®

HYDRECO  
POW AUTO  
ADVANCED HYDRAULIC TECHNOLOGIES

[www.hydreco.com](http://www.hydreco.com)

# Technical Data Sheet

Always allow 20mm extension of the top stage when the body is in the fully lowered position to prevent the body riding on the hoist.

## HOIST DESIGNATION CODES

**Note:** Maximum working pressure is 160 Bar (2300psi).  
Always fit a return filter to the hydraulic system

### Underbody

UBB 127-6-1020

#### Identifier

UBB = Top Mount  
UBE = Bottom Mount

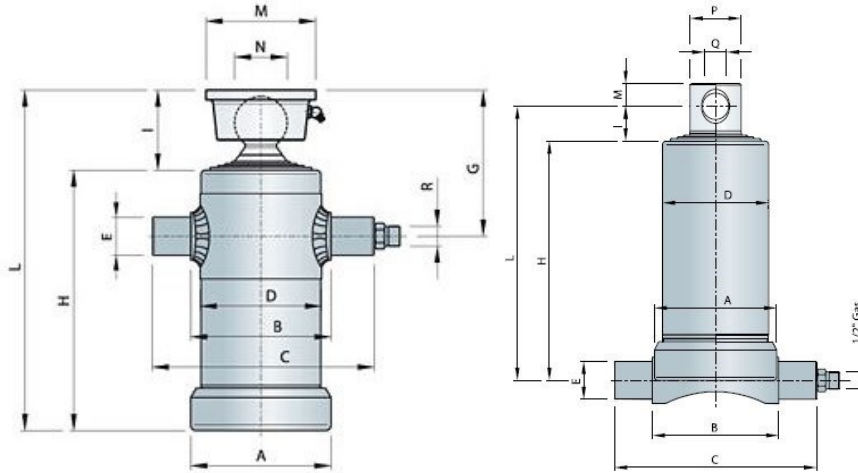
#### Outer Barrel Size

95mm  
114mm  
127mm  
152mm  
193mm

#### Stages

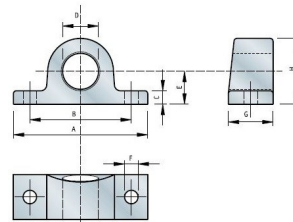
3  
4  
5  
6

#### Stroke, mm



Designation	Stroke	Stage Diameter, mm										Dimensions, mm										Ideal Pivot Centres	Tipping Capacity, Tonnes at 48°			Weight kg	Swept Volume Litres			
		32	46	61	72	76	91	107	127	146	166	A	B	C	D	E	G	H	I	L	M		N	R	100 Bar			140 Bar	160 Bar	
UBB95-3-500	500	X	X		X							110	115	200	95	35	142	245	69	314	100	45	1/2"	565	3.0	4.2	4.8	14	2.0	
UBB114-4-850	850	X	X		X	X						130	135	220	114	35	142	289	71	360	100	45	1/2"	980	5.0	7.0	8.0	22	4.2	
UBB127-4-1500	1500		X	X	X	X	X					145	150	232	127	40	153	454	84	538	115	55	1/2"	1745	8.0	11.2	12.8	40	10.3	
UBB127-4-1700	1700		X	X	X	X	X					145	150	232	127	40	153	504	84	588	115	55	1/2"	1980	8.0	11.2	12.8	44	11.6	
UBB127-4-2000	2000		X	X	X	X	X					145	150	232	127	40	153	578	84	662	115	55	1/2"	2335	8.0	11.2	12.8	53	13.5	
UBB127-5-1050	1050		X	X		X	X	X				145	150	232	127	40	142	288	73	361	100	45	1/2"	1215	5.0	7.0	8.0	26	6.5	
UBB127-5-1250	1250		X	X		X	X	X				145	150	232	127	40	142	328	73	401	100	45	1/2"	1450	5.0	7.0	8.0	29	7.6	
UBB127-5-1500	1500		X	X		X	X	X				145	150	232	127	40	142	378	73	451	100	45	1/2"	1745	5.0	7.0	8.0	33	9.0	
UBB127-5-1850	1850		X	X		X	X	X				145	150	232	127	40	142	448	73	521	100	45	1/2"	2160	5.0	7.0	8.0	38	11.0	
UBB127-5-2150	2150		X	X		X	X	X				145	150	232	127	40	142	508	73	581	100	45	1/2"	2510	5.0	7.0	8.0	41	12.6	
UBB127-5-2500	2500		X	X		X	X	X				145	150	232	127	40	142	578	73	651	100	45	1/2"	2925	5.0	7.0	8.0	45	14.6	
UBB127-6-850	850	X	X	X		X	X	X				145	150	232	127	40	142	218	73	291	100	45	1/2"	980	5.0	7.0	8.0	21	4.9	
UBB127-6-1020	1020	X	X	X		X	X	X				145	150	232	127	40	142	247	73	320	100	45	1/2"	1180	5.0	7.0	8.0	23	5.6	
UBB152-5-2150	2150		X	X	X	X	X	X				170	175	262	152	45	155	521	86	607	115	55	1/2"	2510	9.0	12.6	14.4	61	18.3	
UBB152-5-2500	2500		X	X	X	X	X	X				170	175	262	152	45	155	591	86	677	115	55	1/2"	2925	9.0	12.6	14.4	70	21.0	
UBB152-6-1500	1500		X	X		X	X	X	X			170	175	262	152	45	144	343	75	418	100	45	1/2"	1745	6.0	8.4	9.6	38	11.9	
UBB152-6-1800	1800		X	X		X	X	X	X			170	175	262	152	45	144	393	75	468	100	45	1/2"	2100	6.0	8.4	9.6	43	13.9	
UBB152-6-3000	3000		X	X		X	X	X	X			170	175	262	152	45	144	593	75	668	100	45	1/2"	3515	6.0	8.4	9.6	62	22.2	
UBB193-6-1800	1800			X	X	X	X	X	X	X		220	230	320	193	50	248	406	97	503	107	65	3/4"	2100	18.0	25.2	28.8	84	25.5	
UBB193-6-2220	2220			X	X	X	X	X	X	X		220	230	320	193	50	248	476	97	573	107	65	3/4"	2595	18.0	25.2	28.8	96	30.9	
UBB193-6-3000	3000			X	X	X	X	X	X	X		220	230	320	193	50	248	606	97	703	107	65	3/4"	3515	18.0	25.2	28.8	118	40.8	
			32	46	61	72	76	91	107	127	146	166	A	B	C	D	E	H	I	L	M	P	Q	R						
UBE127-4-1200	1200		X	X	X	X						145	150	230	126	45	380	33	421	27	60	31	1/2"	1390	8.0	11.2	12.8	34	8.4	
UBE127-4-1500	1500		X	X	X	X						145	150	230	126	45	456	33	497	27	60	31	1/2"	1745	8.0	11.2	12.8	39	10.3	
UBE127-4-1700	1700		X	X	X	X						145	150	230	126	45	506	33	547	27	60	31	1/2"	1980	8.0	11.2	12.8	43	11.6	

Feet Designation	Dimensions, mm								Weight kg
	A	B	C	D	E	F	G	H	
UBFM-35	130	95	12	36	30	13	40	56	0.9
UBFM-40	140	108	15	41	33	15	45	66	1.2
UBFM-45	140	108	15	46	33	15	45	66	1.2
UBFM-50	150	116	15	51	36	15	45	71	1.4



Doc: UBH-04/18

POW AUTO

DAVID BROWN HYDRAULICS

HYDRECO

HYDRECO

POW AUTO

ADVANCED HYDRAULIC TECHNOLOGIES

www.hydreco.com