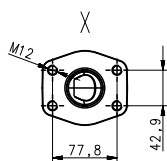
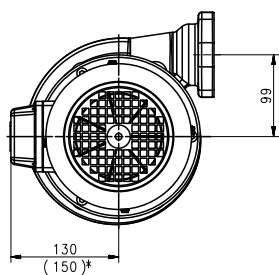
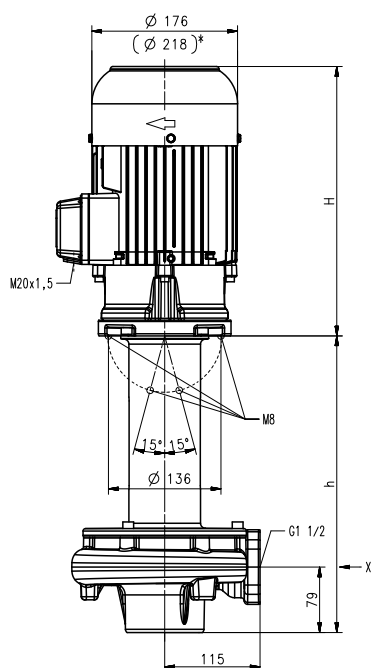


Stainless Steel Immersion Pumps

TVG400...600

Closed impellers

TVG400...600



*) Dimensions for TVG600/60Hz

Type	Vol. del. at manom. del. head l/min / m	Height H mm	Depth of im- mersion h mm	Weight kg	Power kW	Voltage 3~ V	Fre- quen- cy Hz	Current A	Speed 1/min
TVG400/360	400/12	325	358	47	1.7	220-240	50	6.24	2890
580			578	53					
880			878	66					
1100			1098	72					
TVG400/360	400/21	358	358	51	2.94	460	60	5.1	3480
60Hz				57					
580			578	57					
60Hz				70					
880			878	70					
1100			1098	76					
60Hz				76					
TVG600/360	400/16	358	358	50	2.2	220-240	50	7.8	2890
580			578	56					
880			878	69					
1100			1098	75					
TVG600/360	400/27	396	358	62	3.8	460	60	6.4	3520
60Hz				68					
580			578	68					
60Hz				80					
880			878	80					
1100			1098	86					
60Hz				86					

Stainless Steel Immersion Pumps

are centrifugal pumps of compact design with the impeller mounted directly onto the extended motor shaft.

The **TVG pump** series maximizes hydraulic efficiencies with its **closed impeller** design.

These pump series are both particularly well suited for industrial washing applications of metal parts.

Complete pump and plate assemblies, including discharge pipe and mounting plate are available upon request.

Applications

- Types of fluid
- Industry water
 - coolants
 - cooling/cutting oils
 - lees / solvents
 - de-ionized water
- Kinematic viscosity
- ...20 mm²/s (20 cSt)
- Pumping temperature
- 0...90° C

Construction

Pump body	CrNi-steel
Cover	CrNi-steel
Impeller	CrNi-steel
Shaft	CrNi-steel
Optional:	
Suction cover	with threaded inlet
Noise level	
TVG400	66 dBA
TVG600	
TVG400/60Hz	69 dBA
TVG600/60Hz	74 dBA

