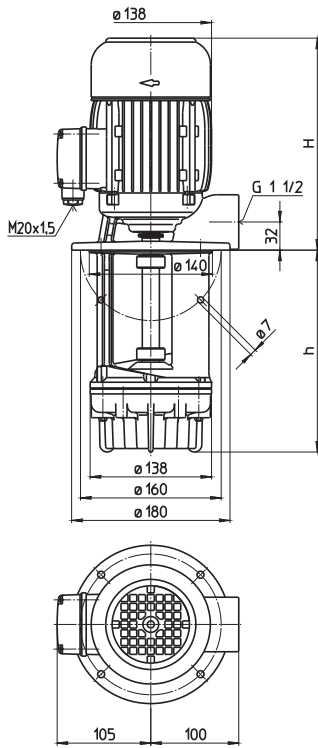


Quick Suctioning Immersion Pumps

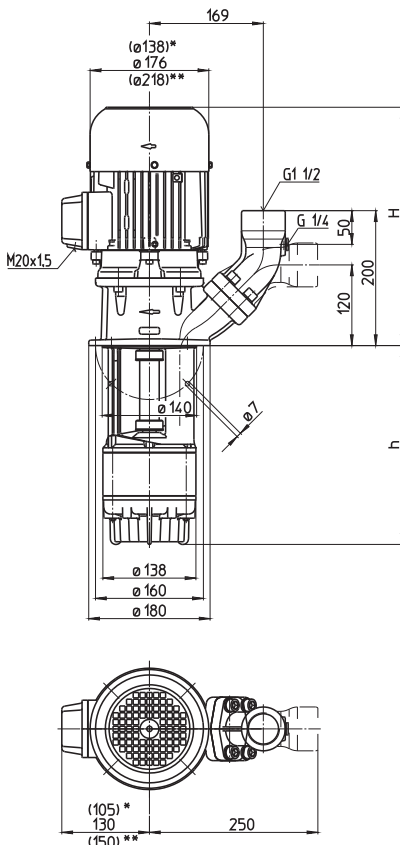
TGL/SGL501...503

Axial/semi-open impellers

TGL501



SGL501...503



*) Dimensions for SGL501
 **) Dimensions for SGL503

Type	Vol. del. at manom. del. head l/min /m	Height H mm	Depth of im- mersion h mm	Weight kg	Power kW	Voltage 3~ V	Fre- quen- cy Hz	Current A	Speed 1/min
TGL501/150	250/6	291	150	17.0	1.1	220-240	50	4.33	2850
	230		230	18.5					
	300		300	19.5	1.27	460	60	2.4	3440
	380		380	20.5					
	470		470	21.5					
	580		580	22.5					
SGL501/150	250/6	361	150	23.5	1.1	220-240	50	4.33	2850
	230		230	24.5					
	300		300	25.5	1.27	460	60	2.4	3440
	380		380	27.0					
	470		470	28.0					
	580		580	30.0					
	780		780	36.0					
	930		930	38.0					
	SGL502/220	250/15	439	215					
300			295	41					
370			365	42	2.55	460	60	4.4	3480
450			445	43					
540			535	45					
650			645	47					
850			845	54					
1000			995	55					
SGL503/280	250/23	478	280	54	3.3	220-240	50	11.6	2930
	360		360	55					
	430		430	56	3.8	460	60	6.4	3520
	510		510	57					
	600		600	59					
	710		710	61					
	910		910	67					
1060		1060	69						

Quick Suctioning Immersion Pumps

series TGL/SGL equipped with the patented "BRINKMANN's Suction De-aeration System" are excellently suited to pumping **extremely air entrained fluids** (grinding oils) as they occur in **high-speed grinding**.

The quick suctioning immersion pumps reach stable working conditions as soon as the liquid level reaches the suction inlet.

The SGL serie offers a (SAE) flange with pressure gauge connection port.

The flange can be rotated for either horizontal or vertical pipe connections.

Applications

- Types of fluid
 - coolants
 - cooling/cutting oils
 - grinding oils
- Kinematic viscosity
 - ...45 mm²/s (45 cSt)
- Pumping temperature
 - 0...80° C

Construction

- | | |
|-----------------|------------|
| Pump body | cast iron |
| Cover | cast iron |
| Impeller axial | cast steel |
| Impeller radial | cast steel |
| Shaft | steel |

